



# CUT-TO-SIZE PROGRAM

---



**COMPANY PROFILE**

Based in Wooddale, Illinois, Linnstone is a leading distributor of premium quartz surfaces for retail, commercial, and multi-family markets. Beyond providing high-quality quartz slabs, Linnstone, in partnership with PANMIN—Cambodian Zulite Stone Co., Ltd., Fujian Panmin Co., Ltd., and Fujian Nanan Deyuan Stone Co., Ltd.—offers a competitive Cut-to-Size Program. This program features a wide range of surfaces, including quartz, granite, and crystalline silica-free options, catering to the varied needs of diverse projects.

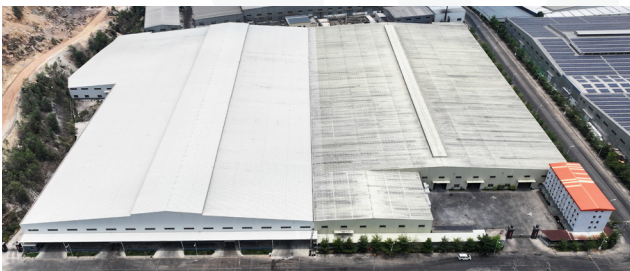
With a main office and two factories in China, along with a factory in Cambodia, PANMIN forms a robust global production network. This integrated network ensures the efficient supply of exceptional quartz products and services worldwide.



**Zhangzhou, China**



**Nanan, China**



**Sihanoukville, Cambodia**

## LINNSTONE CAPABILITIES



### Superior Service

#### Easy Communication:

Unified contact process for China and Cambodia orders. The same dedicated contact person and consistent file format across factories ensure smooth and efficient communication.

#### Take Offs & Shop Drawings:

Offering take-offs and shop drawings enabling clients to visualize their projects and achieve precision during production.

#### Fast Lead Time:

With nearly 700 skilled employees across China and Cambodia, Linnstone provides quick lead times. Approximately 4 weeks for natural stone products from China and 4-6 weeks for quartz products from Cambodia.

#### Reliable Crating:

As the first in the industry to offer durable plywood crates for both natural and quartz products, Linnstone ensures shipments arrive safely and securely, minimizing the risk of breakage during transport.

#### Availability:

Broad distribution through trusted Linnstone partners. Easily locate a distributor near you for expert guidance on your project, onsite sample selection and personalized assistance.



### Trusted Expertise & Assurance

#### Diverse Product Range:

Linnstone offers natural stone, quartz, and Crystalline Silica Free Surfaces, it's ideal for commercial, hospitality, multi-family, and residential applications, including kitchen countertops, bathroom vanities, backsplash, wall panels, tiles and more.

#### Decades of Trust:

With over 30 years of experience in the industry, we have been serving US clients since 1997. Our deep expertise in Cut-to-Size projects ensures high-quality results for all custom orders.

**Lasting Warranties:**

Linnstone provides comprehensive coverage with a 15-year warranty for residential use and a 10-year warranty for commercial applications.

**Certified Quality & Compliance****Proven Certifications:**

Since 2012, we have been backed by internationally recognized certifications, including SGS, NSF, and UL. Our products are CE certified and NSF evaluated, ensuring adherence to global quality standards. Additionally, they are Greenguard Gold certified by UL for low chemical emissions, ensuring safety for sensitive individuals such as children, the elderly, and patients in schools and hospitals. These certifications guarantee maximum safety and protection for end consumers.

**Regulatory Compliance:**

We employ the SAP ERP system to ensure full regulatory compliance, recognized by US Customs. The system tracks orders from sales through production and inventory to purchasing, guaranteeing adherence to US trade regulations such as anti-dumping and anti-circumvention. Our China factory has been utilizing SAP ERP system since 2023, with the Cambodia factory implementing it in April 2024.

**Anti-Dumping Protection:**

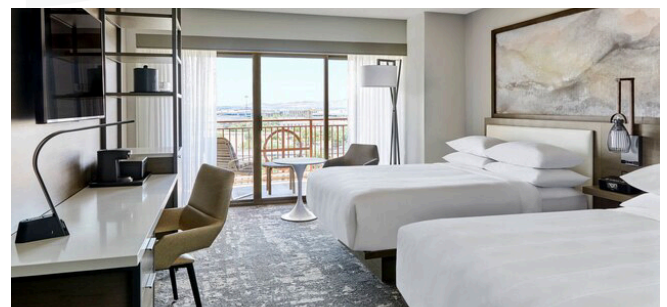
With a zero-tolerance-to-transshipment policy in Cambodia, Linnstone ensures compliance and protects against anti-dumping cases. This policy, combined with our unique position as the only quartz factory in Cambodia, secures supply stability for our clients.

## CUT-TO-SIZE PROJECTS

### Residential Projects



### Hotel Projects



## CONTACT US

**Email:**

**info@linnstone.com**

**Website:**

**www.linnstone.com**

**Address:**

**955 Sivert Drive, Wood Dale, IL 60191**

**Unit P, 25 Commerce Rd, Fairfield, NJ 07004**



Scan for more