



QUARTZ SURFACES



FOR FURTHER DETAILS,
VISIT WWW.LINNSTONE.COM



2024 COLLECTION
www.linnstone.com

COMPANY PROFILE

Linnstone proudly offers premium quartz surfaces, crafted to enrich your unique space with distinctive and diversified design styles for residential and commercial interiors such as kitchen countertops, bathroom vanities, office tables, wall panels, and more. Each piece combines high-quality natural quartz with resin and pigments, meticulously produced and inspected to surpass customer expectations. Advantaged by its non-porous nature, our surfaces are impenetrable to air, water, or other fluids, ensuring lasting quality and easy maintenance. They are exceptionally durable, withstanding abrasion, heat, compression, and corrosion, while promoting hygiene with high resistance to bacteria, mold, and mildew growth. Backed by rigorous third-party testing and certification, Linnstone guarantees maximum safety and product longevity, offering warranties ranging from 10 years to a lifetime for both commercial and residential applications. If you're seeking a sophisticated yet enduring stone design, Linnstone is your perfect choice.

1 Non-porous

Impenetrable to air, water, or other fluids for lasting quality

2 Durable

Durability as its high resistance to abrasion, heat, compression, and corrosion

3 Enduring Quality

Linnstone quartz surfaces use high-quality natural quartz, offering our warranty assurance

4 Easy to Clean & Care

General surface stains can be removed with water and mild cleaning products

5 Hygienic

High resistance to bacteria, mold, and mildew growth and remains safe and clean

6 Stain Resistance

Stain resistance and perfect for a quick clean up and low maintenance

7 Scratch Resistance

Highly resistant to scratches and not susceptible to scrapes

Zion Sand
6076

WHY ZULITESTONE?

0%

With a Formula Free of Crystalline Silica

30%

Up to 30% Minerals for Optimal Performance

70%

Up to 70% Recycled Raw Materials

100%

Close to 100% Recycled Water

Zulitestone from Linnstone is a revolutionary Crystalline Silica Free Surface, engineered for high performance and safety during fabrication. This material retains its exceptional durability even with the inclusion of recycled materials and minerals. Zulitestone holds certifications from reputable organizations and undergoes regular performance verification through SGS testing and other quality assurance measures, ensuring it is a high-quality and safe option for the market. Environmentally friendly, zulitestone embodies ecological reliability by using sustainable resources like recycled water. Its versatility makes it ideal for applications such as countertops, backsplashes, wall paneling, vanity tops, flooring, and more.

Choose zulitestone from Linnstone: the innovative, superior choice for Crystalline Silica Free Surfaces. Experience the assured quality, durability, and sustainability for yourself.

* Zulitestone Crystalline Silica Free Surfaces are available for special order now.



Crystalline Silica Free



Durability



Certified



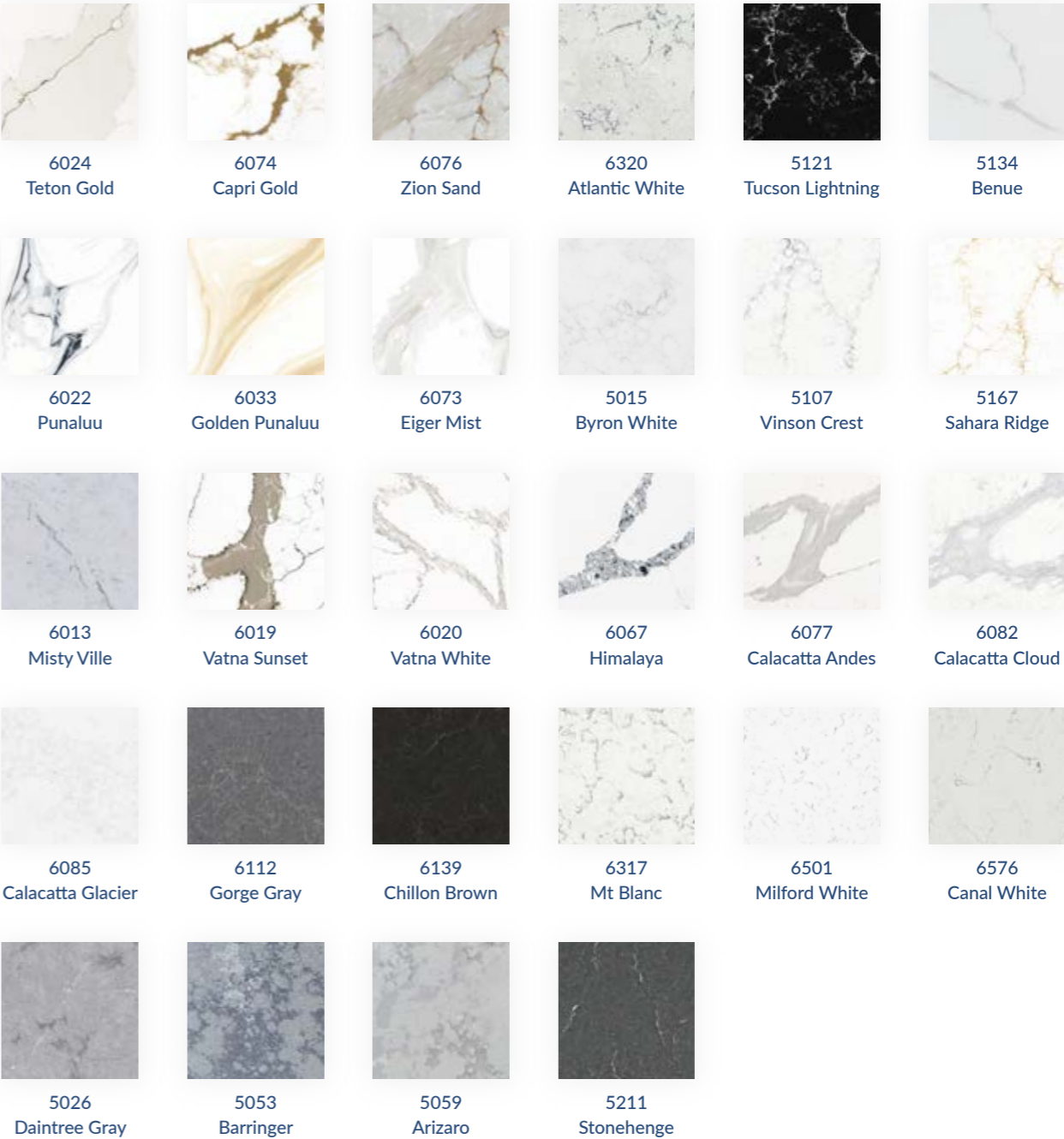
Sustainability



Various Applications

NATURAL COLLECTION

The Natural Collection offers an extensive range of patterns inspired by earth, marble, rivers, and more. With delicate and harmonious shades, it enriches each unique space for striking effects. Whether long or short lines, complex or concise, the Natural Collection captures and evokes the essence of nature.





NEW

FEATURED

Teton Gold
6024



Scan to Get Inspirations

Teton Gold, inspired by the awe-inspiring Teton Range, embodies the essence of nature's artistry. This stunning surface, featuring a pristine white background interlaced with delicate gold and gray veins, reflects the beauty of snow-capped peaks bathed in the golden hues of a sunset. The veins, reminiscent of the rugged yet graceful rock formations of the Tetons, bring a timeless elegance and natural wonder to any space. Every line in Teton Gold narrates a story of nature's grandeur, blending the purity of snow, the warmth of sunlight, and the strength of mountain stone.

NEW

FEATURED

Capri Gold
6074



Scan to Get Inspirations

Capri Gold encapsulates the serene and luxurious essence of Italy's famed Capri Island. This exquisite surface, with its pristine ultra-white base, mirrors the sun-kissed beaches and crystal-clear waters that make Capri a world-renowned paradise. The intricate gold veins, gracefully weaving across the slab, evoke the enchanting allure of sunlight dancing on the Mediterranean waves, casting a golden glow.





NEW
FEATURED

Zion Sand
6076

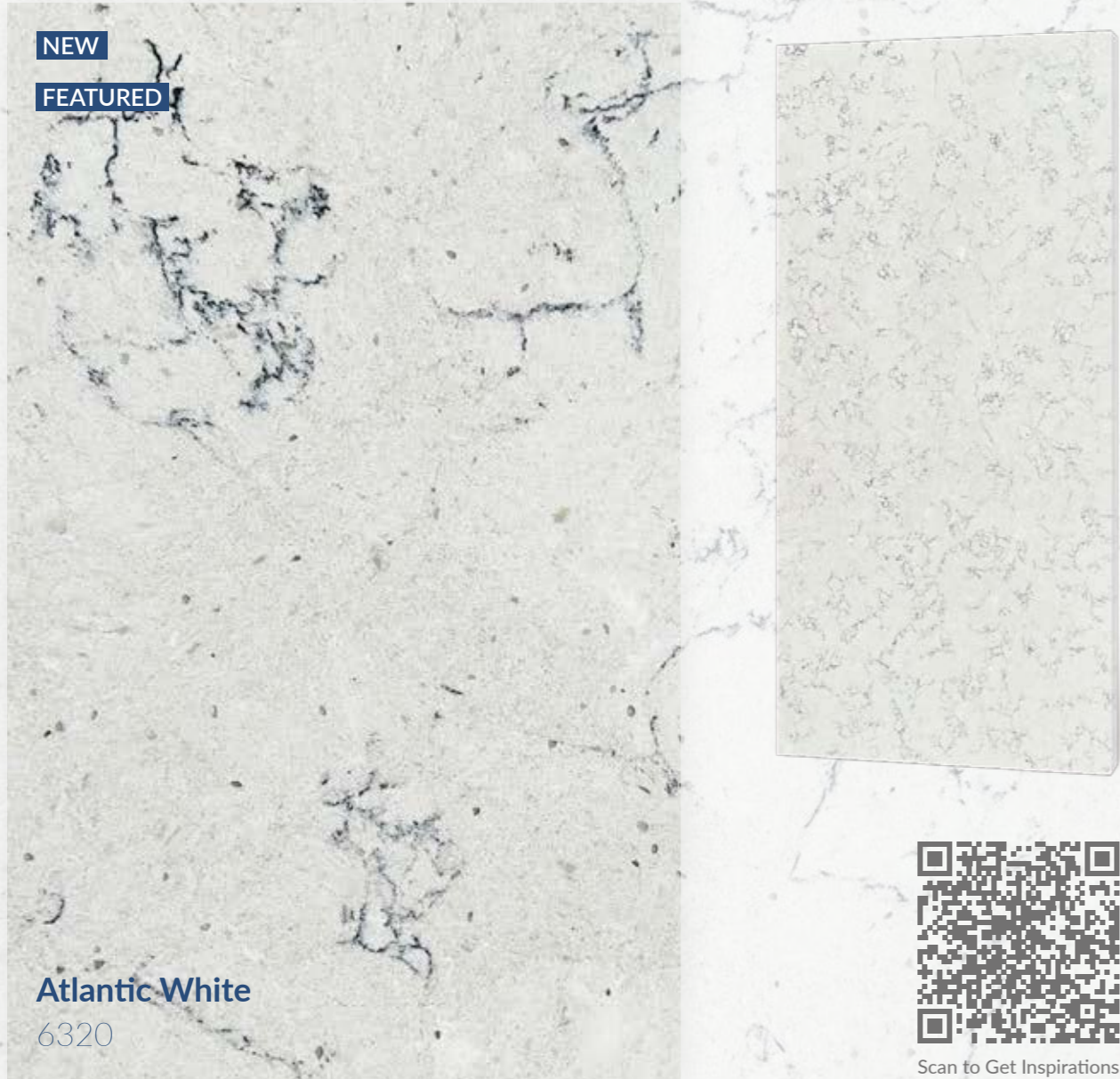


Scan to Get Inspirations

Zion Sand, much like the timeless sandstone landscapes of Zion National Park, seamlessly weaves the tranquility and grandeur of nature into every inch of its surface. The blend of beige and brown resembles the soft caress of dawn across the earth, radiating a warm glow. The subtle textures on the stone's surface evoke the delicate touch of nature's fingers, tracing whispers of the wind and the marks of time.

NEW

FEATURED



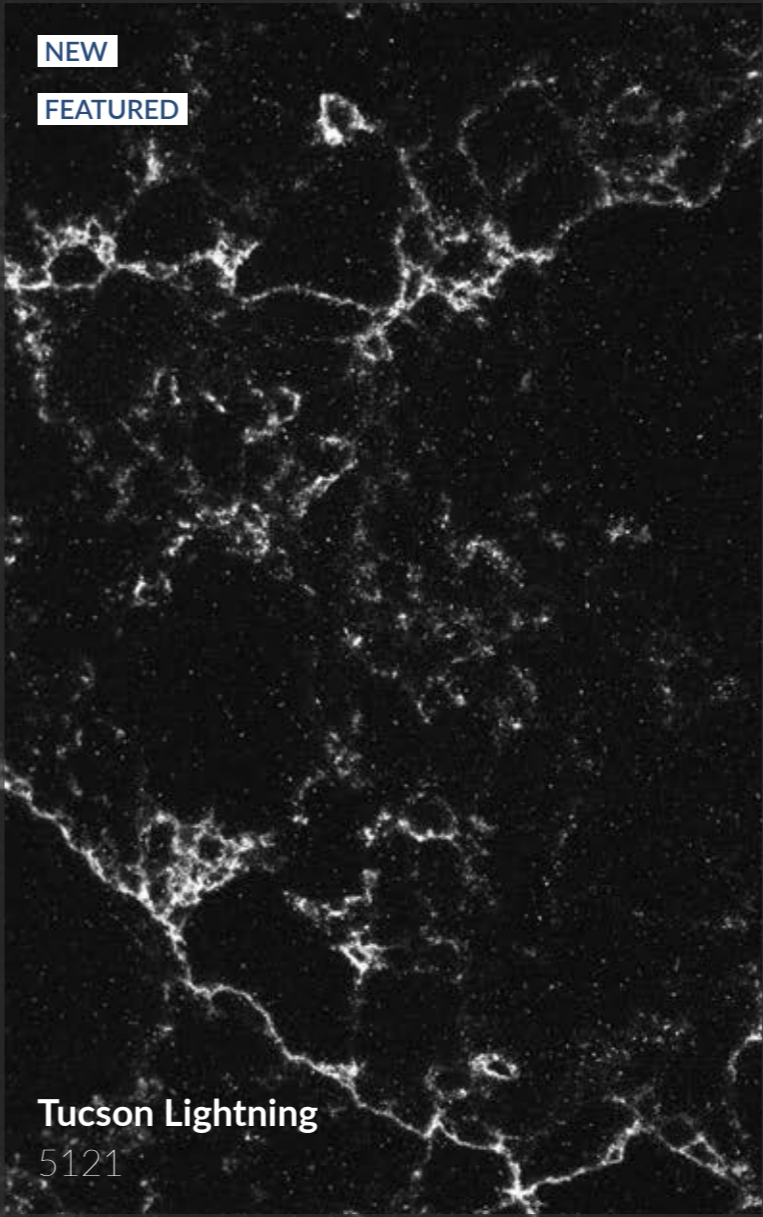
Atlantic White
6320



Scan to Get Inspirations

Atlantic White softly narrates the expansive tales of the vast and mysterious Atlantic Forest. Its facade, a light canvas, reflects the wild purity of an expansive sky of clouds. Tracings of a fine grey and subtle black wander across the stone, similar to the gentle shadows of forest spirits weaving between trees. Every mark and curve is a quiet ode, mirroring the serene calm of nature's pristine havens.



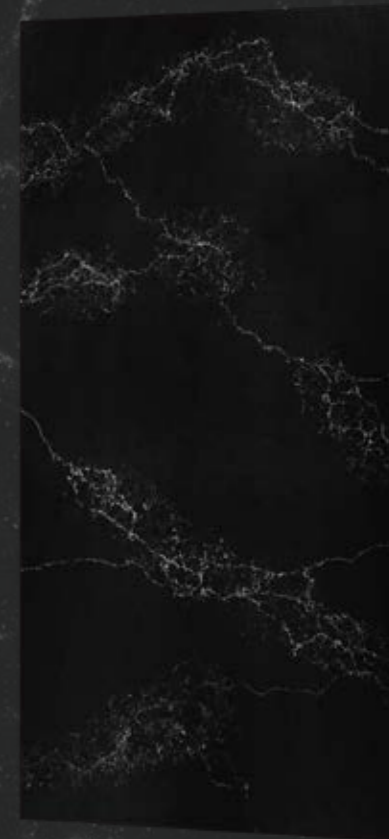


NEW

FEATURED

Tucson Lightning

5121



Scan to Get Inspirations

Tucson Lightning captures the dramatic essence of Arizona's stormy nights. This striking surface, with its deep black background interlaced with vivid white veins, reflects the raw power and beauty of lightning illuminating the dark sky. The veins, like flashes of lightning, streak across the stone, adding electrifying elegance and bold character to any space. Each line tells a story of nature's untamed energy, blending storm intensity with the timeless allure of night.

NEW

FEATURED



Scan to Get Inspirations

Benue
5134

Atlantic White softly narrates the expansive tales of the vast and mysterious Atlantic Forest. Its facade, a light canvas, reflects the wild purity of an expansive sky of clouds. Tracings of a fine grey and subtle black wander across the stone, similar to the gentle shadows of forest spirits weaving between trees. Every mark and curve is a quiet ode, mirroring the serene calm of nature's pristine havens.





CALLIGRAPHY COLLECTION

FEATURED



Punaluu
6022

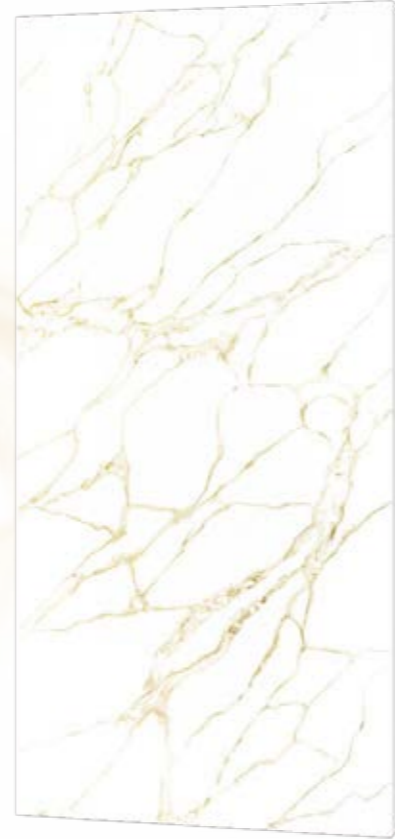


Scan to Get Inspirations

A snow-white base with graphite black veins that penetrate the whole slab. Silky black grains of sand meander and stretch with a bright shine that adds a charming and mysterious sense to the surface.

CALLIGRAPHY COLLECTION

FEATURED



Golden Punaluu
6033



Scan to Get Inspirations

A stunning delicate quartz surface characterized by waves of a white base with golden veins spanning across the whole slab. Glittering under the sunshine, the golden surface with fish-scales seawater lines highlights its elegance and grandeur.





CALLIGRAPHY COLLECTION

FEATURED

Eiger Mist
6073



Scan to Get Inspirations

Thin mist surrounds the Eiger mountains as though roaming in a wonderland. The Eiger looms through the mist, partly hidden and partly visible like a fairyland or a fantasy lingering in a dream. Eiger Mist is a quiet white surface marked by sinuate light gray veins with brown edges radiating in all directions.

FEATURED



Byron White
5015



Scan to Get Inspirations

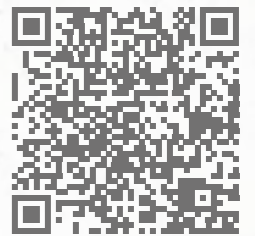
Charcoal grey veins hit the milky surface as waves chase and race against each other, creating a flow of nature. The cascading design of Byron White adds a sense of movement and mystery.





FEATURED

Vinson Crest
5107



Scan to Get Inspirations

At the end of the world of the Antarctic, the sculptural sweep of snow and ice surface is interrupted by majestic Vinson Crest. A winding frozen black ridge vein stretches miles from the peak to the open area, meeting the sky along a noticeably curved horizon. A paradise of clean lines—austere, vast, unfussy deserves to savor.

FEATURED



Sahara Ridge
5167



Scan to Get Inspirations

Powerful and imposing, a sea of golden waves veins that appear to have no beginning and no end, stretching across all Sahara Ridge surface. Undulating crests and valleys merging and changing shape, shimmer in Sahara wilderness. Its beauty is the only thing that rivals its size, keeping your eyes constantly occupied.



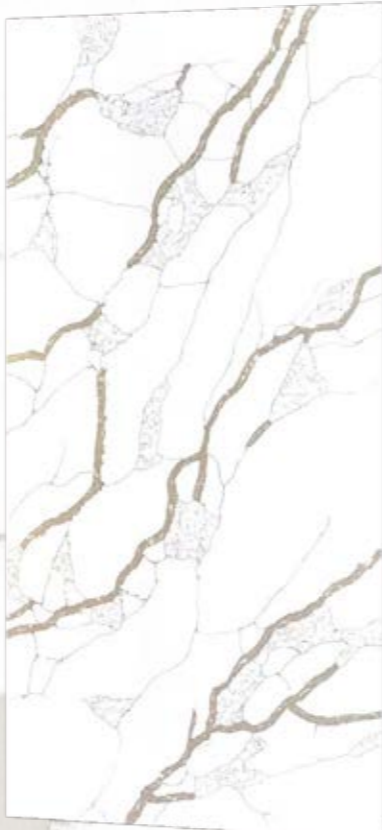


Misty Ville
6013



Scan to Get Inspirations

The white mist flows slowly with ville gleamingly, walking in the fog as in a dream. It is not a mirage – it is better than a mirage. Mist Ville adopts hazy lines that wriggle up to the ends of the milky white surface, the design reflecting tranquility and grace. Looking through the dawn's mist, the trees and grasses of the ville are given a unique charm.



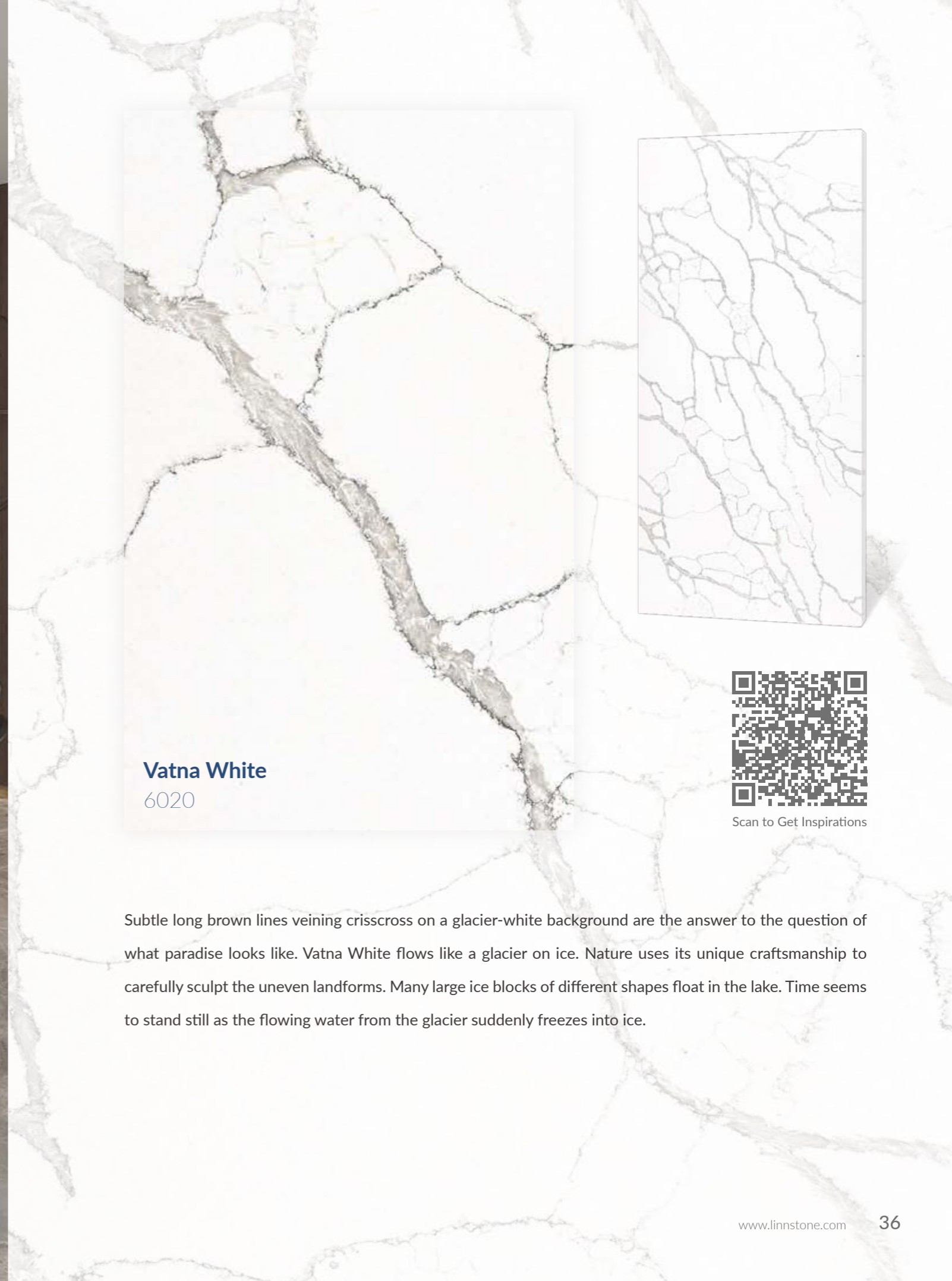
Vatna Sunset
6019



Scan to Get Inspirations

Warm golden tones appear to reflect the setting sun, with golden veins resembling Vatna Sunset. The gray veins of the Vatna Sunset meet the golden veins, and it winds through the rocks on both sides of the valley, carrying them far downstream and forming cirques, moraines, and fjords like a glacier advancing in the sun's rays.



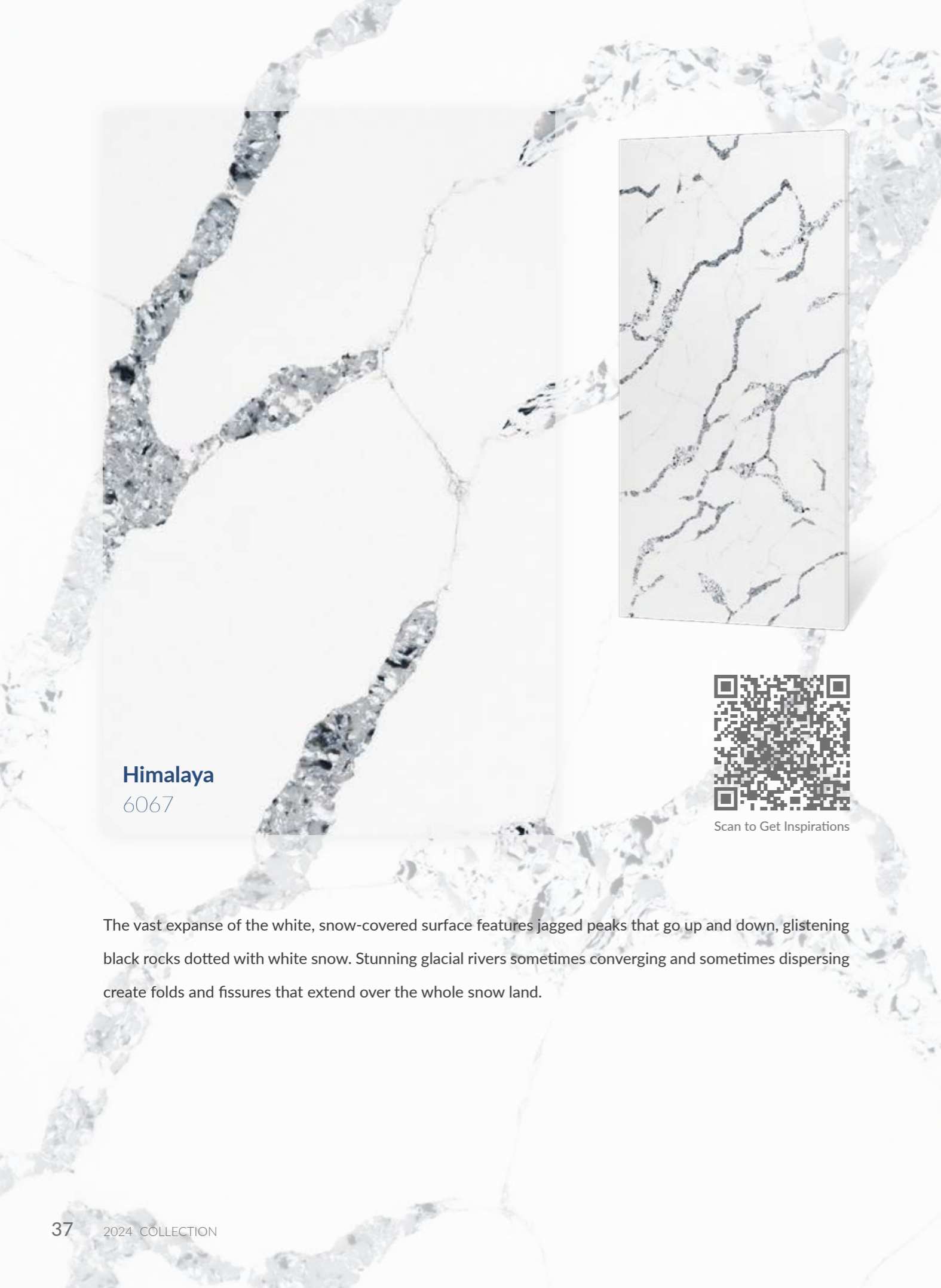


Vatna White
6020



Scan to Get Inspirations

Subtle long brown lines veining crisscross on a glacier-white background are the answer to the question of what paradise looks like. Vatna White flows like a glacier on ice. Nature uses its unique craftsmanship to carefully sculpt the uneven landforms. Many large ice blocks of different shapes float in the lake. Time seems to stand still as the flowing water from the glacier suddenly freezes into ice.



Himalaya
6067



Scan to Get Inspirations

The vast expanse of the white, snow-covered surface features jagged peaks that go up and down, glistening black rocks dotted with white snow. Stunning glacial rivers sometimes converging and sometimes dispersing create folds and fissures that extend over the whole snow land.





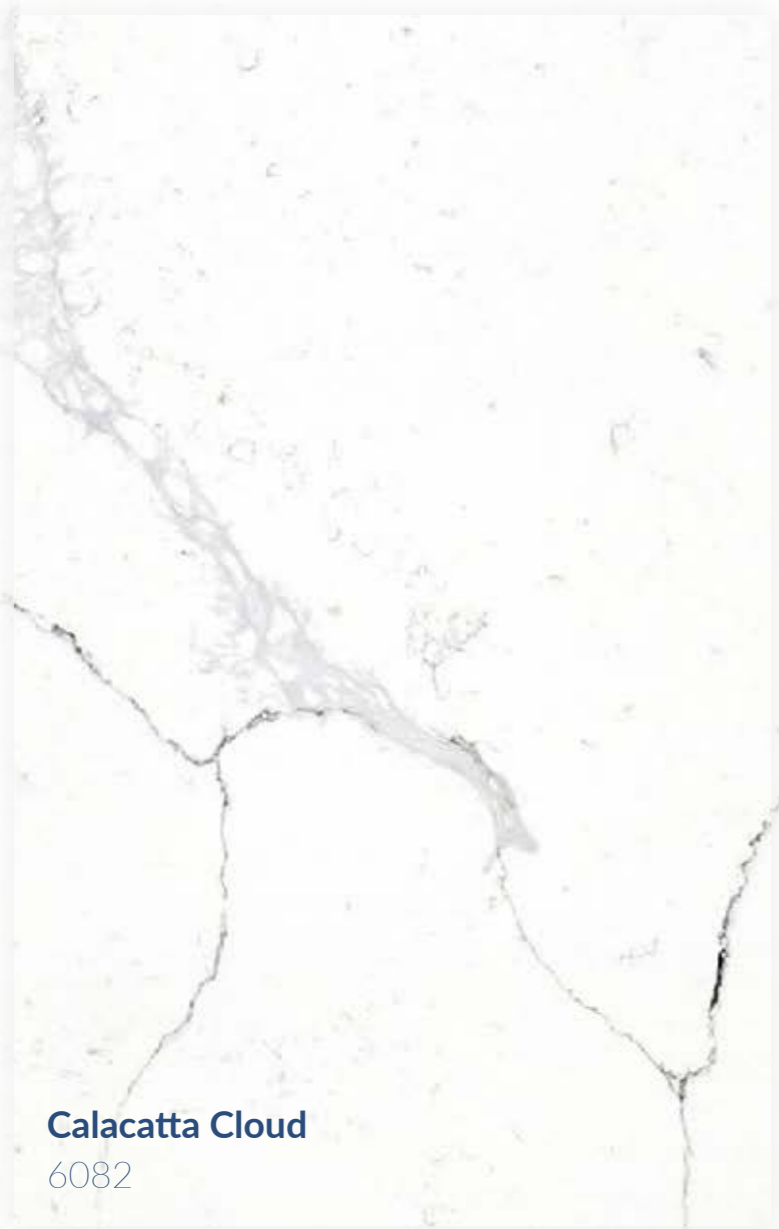
CALLIGRAPHY COLLECTION

Calacatta Andes
6077



Scan to Get Inspirations

Someone once said that Calacatta deserves to be called the color closest to nature. It combines the white of the purest natural Andes snow with bright grayish veins stretching across the surface. Generally believed to be originated from the Quechua word "anti" meaning "East", Calacatta Andes is the dawn light breaking in the east and spreading over its quartz surface.



Calacatta Cloud
6082



Scan to Get Inspirations

Graceful and natural, Calacatta Cloud features long gray lines on a cream-white base like a gorgeous fairy-tale princess in a light white dress, bringing people a beautiful vision. Rising and falling, rolling and unraveling, the clouds move with the wind, misty and scattered.



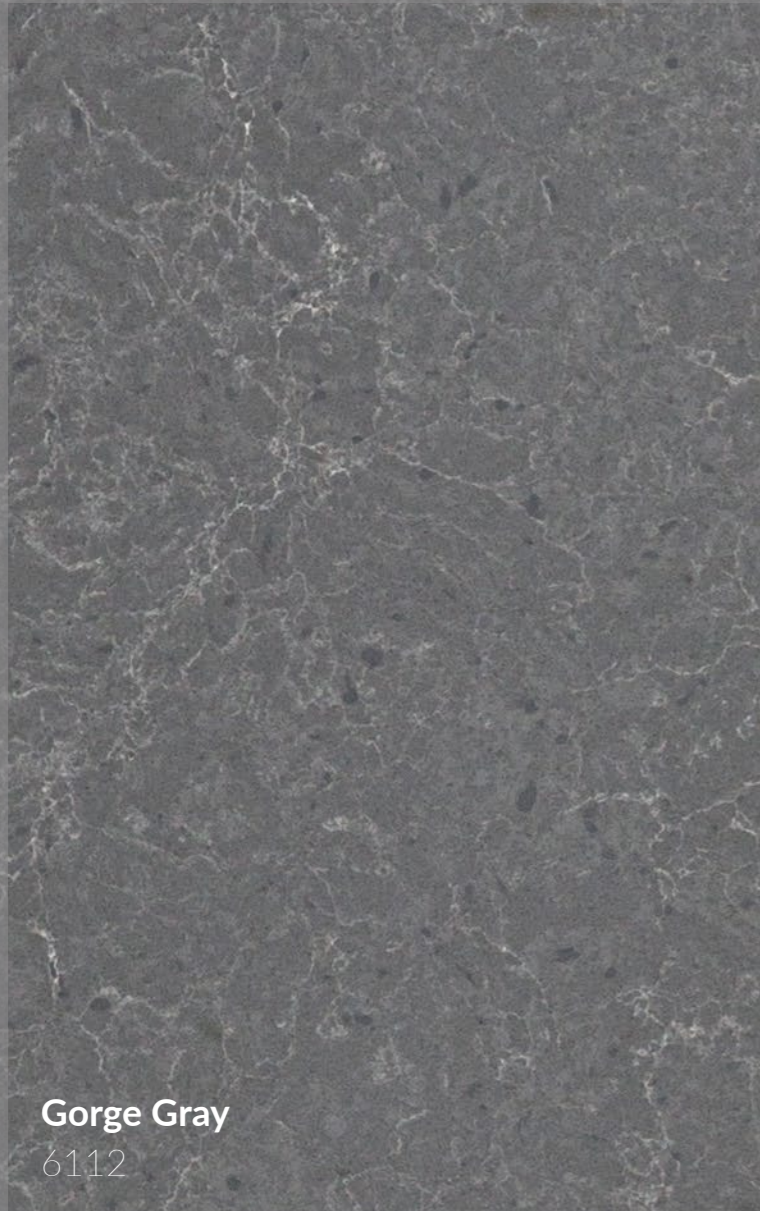


Calacatta Glacier 6085



Scan to Get Inspirations

Calacatta Glacier is a cool inspiration with fish-scale stripes piercing the whole surface. This stand-out design is derived from nature: geological movement and the erosion of ablation water have created the shapes of fish scales on a glacier, which is called the gravity flow.



Gorge Gray
6112



Scan to Get Inspirations

As its name implies, Gorge Gray gathers swirls of white veins on a gray surface just like a fast-flowing river in a gorge. Surging water gurgling and lush trees swaying in its depth increase the mystery of the gorge. Beauty and the unknown are an adventure.



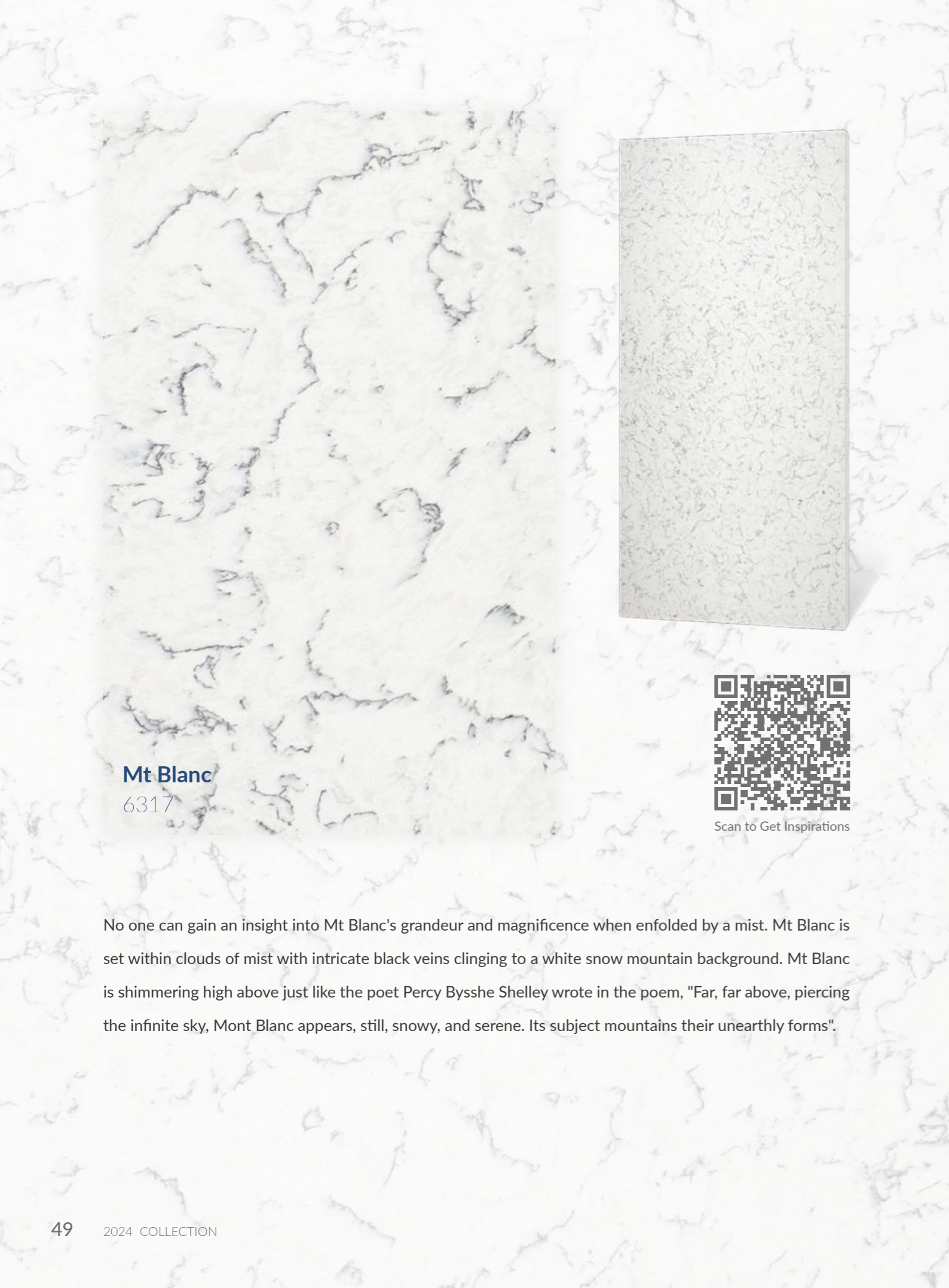


Chillon Brown
6139



Scan to Get Inspirations

Chillon Brown's fine ripple texture on the brown surface evokes a feeling not of time flying but of traces of time, adding more elegance. This inspiration is connected to medieval Chillon Water Castle surrounded by glamorous Lake Geneva and the majestic Alps, shining like a pearl.



Mt Blanc
6317



Scan to Get Inspirations

No one can gain an insight into Mt Blanc's grandeur and magnificence when enfolded by a mist. Mt Blanc is set within clouds of mist with intricate black veins clinging to a white snow mountain background. Mt Blanc is shimmering high above just like the poet Percy Bysshe Shelley wrote in the poem, "Far, far above, piercing the infinite sky, Mont Blanc appears, still, snowy, and serene. Its subject mountains their unearthly forms".





Milford White
6501



Scan to Get Inspirations

Gentle flowing or roaring into a natural dulcet symphony on the surface of Milford White, subtle grayish short veins exactly like the large and small waterfalls on the cliffs of Milford Sound. The splashing spray creates infinite beauty.



Canal White
6576



Scan to Get Inspirations

The rolling movement of the veins of Canal White are as busy as the Panama Canal. Known as the "World Bridge" as one of the world's seven engineering wonders, the Panama Canal connecting the Pacific and Atlantic Ocean is working lively to perform its duty. Waves that oscillate from time to time on Canal White are witness to the busyness and attractiveness.



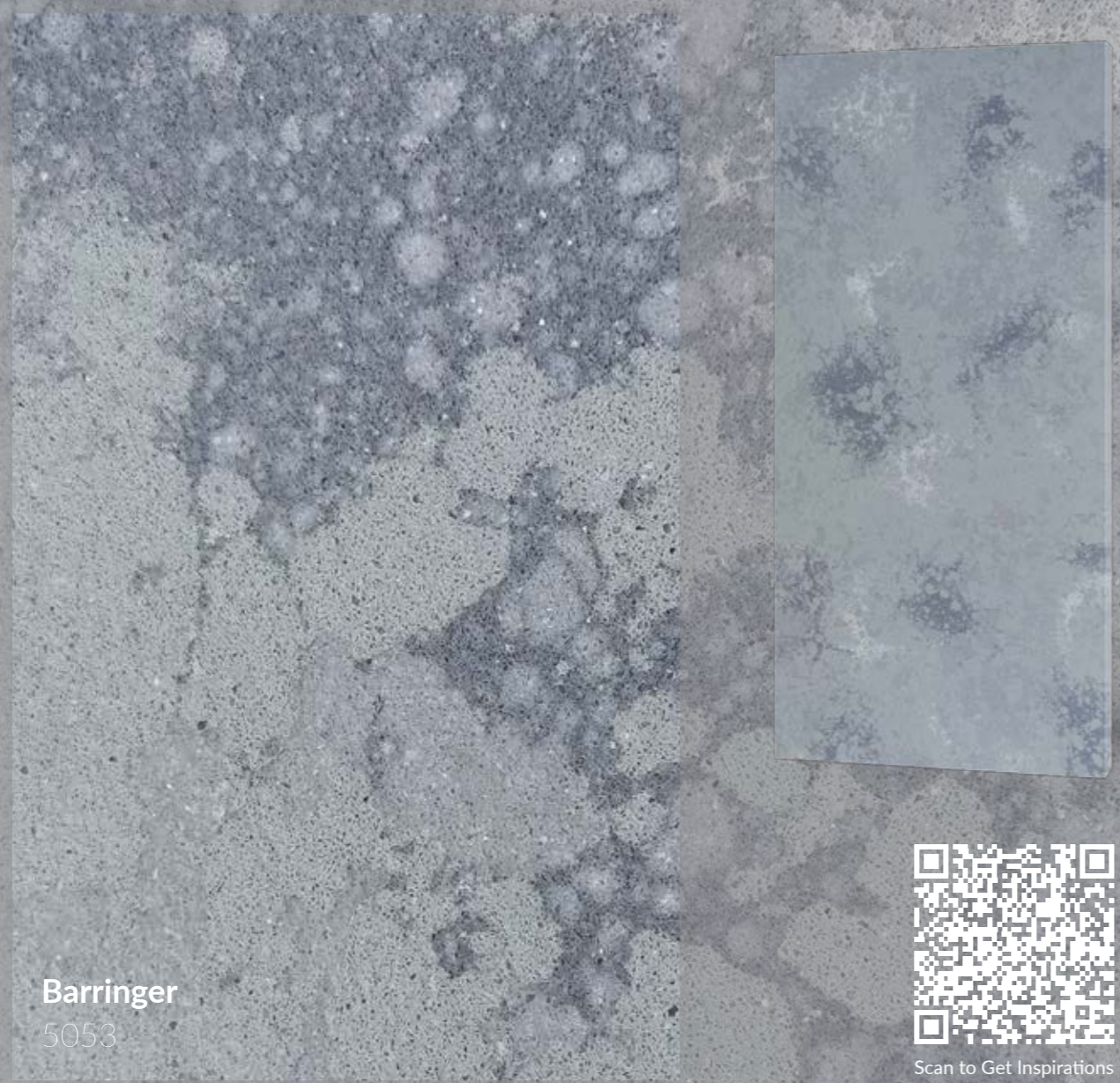


Daintree Gray
5026



Scan to Get Inspirations

Extract, integrate, and create 180 million years of natural beauty to present on the surfaces. Tune every sense, breathe, touch, hear, and feel Dantree Gray's connection to ancient energy. Wisps of light fall into the surrounding jungle, casting dappled shadows on the surfaces. The exquisite staggered merging of floating white light and gray shadow, bizarre, is an allure and appeal.



Barringer
5053



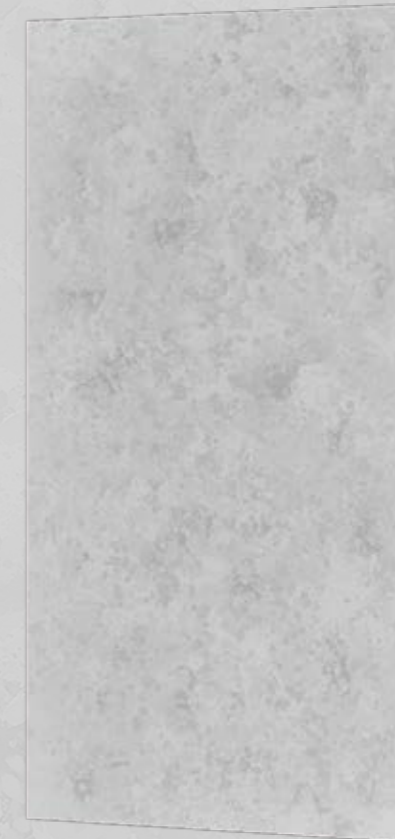
Scan to Get Inspirations

You'll understand why there's something about Barringer that just makes your pulse race if you've ever seen them in person. Perhaps the leather finish and concrete grey tones have captured the untamed, unrefined splendor of nature. Unique to them are the grey crater-like patterns found all over their surfaces.



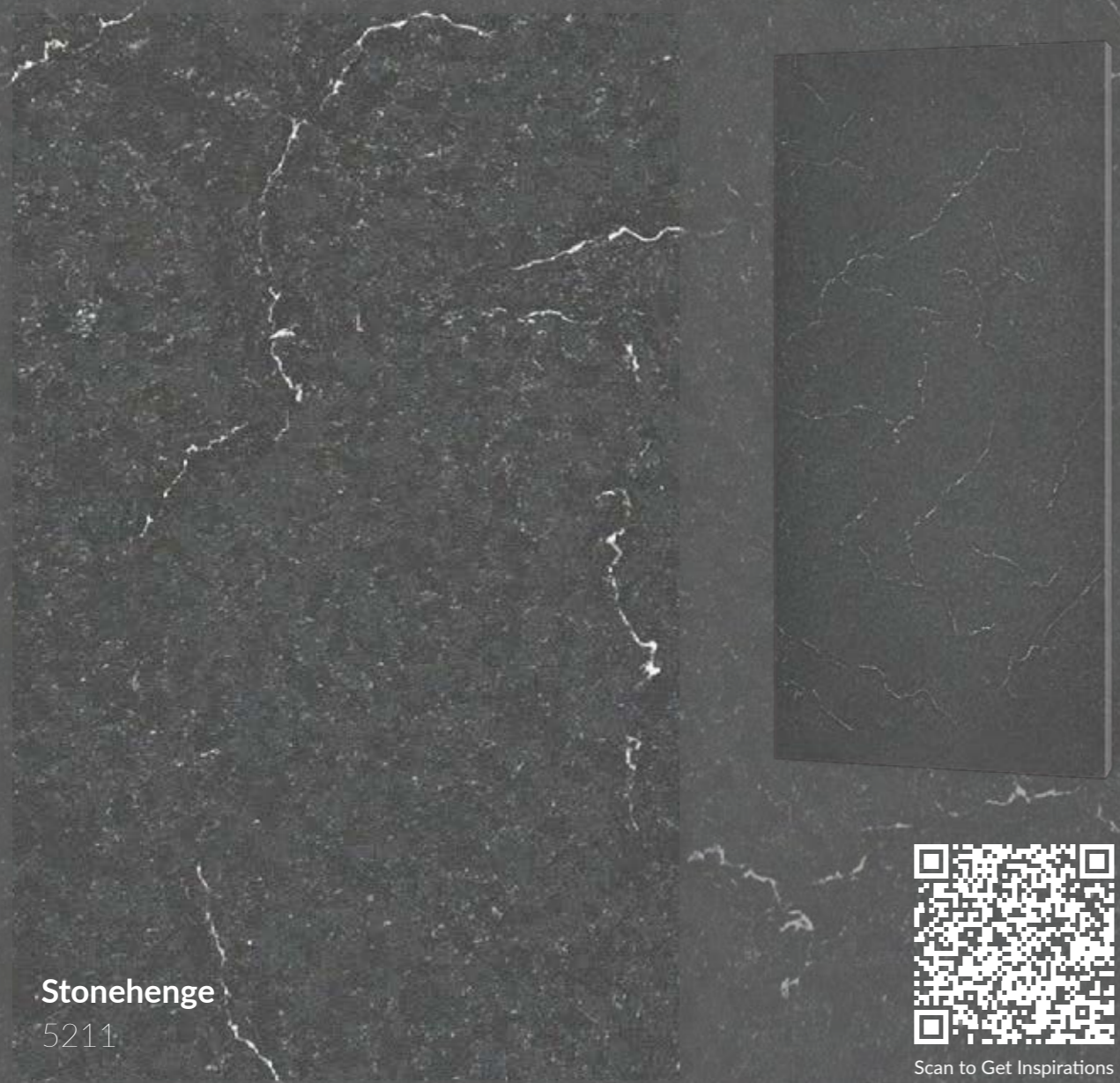


Arizaro
5059



Scan to Get Inspirations

Arizaro's quartz surface is reminiscent of a white salt flat. Walking through it allows you to feel the purity of the ground beneath your feet. The grey veins on the white base give it a silvery sheen. The grey conical forms studded against the white horizon stood motionless, like silent sentinels, carefully guarding the land.



Stonehenge
5211



Scan to Get Inspirations

Stonehenge offers a dove gray background with short white zigzagging veins, summoned up by the sun rising on a midsummer day as lights strike upon the lofty rock circles on Salisbury Plain. It absorbs the aura of heaven and earth, holy and mysterious.



CLASSIC COLLECTION

Simple yet vintage, Classic Collection with a timeless look that never goes out of style. The modest monochromatic appearances add a touch of clean and seductive reverie for your exclusive spaces. Mirror flecks and grains patterns options offer a more subtle unique personality if a little special pattern on pure colors quartz is preferred.



1001
Denali White



1010
Tahiti White



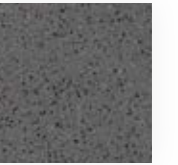
1073
Kamari



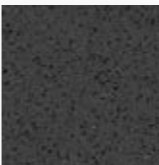
1100
Merapi Gray



3003
Moreno White



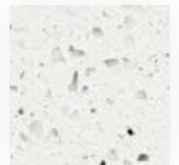
3032
Rock Gray



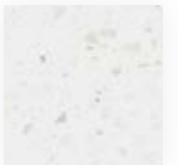
3041
Volcano Gray



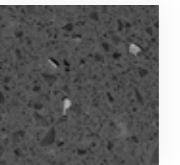
7009
Sandy White



7027
Crystal White



7045
Shell White



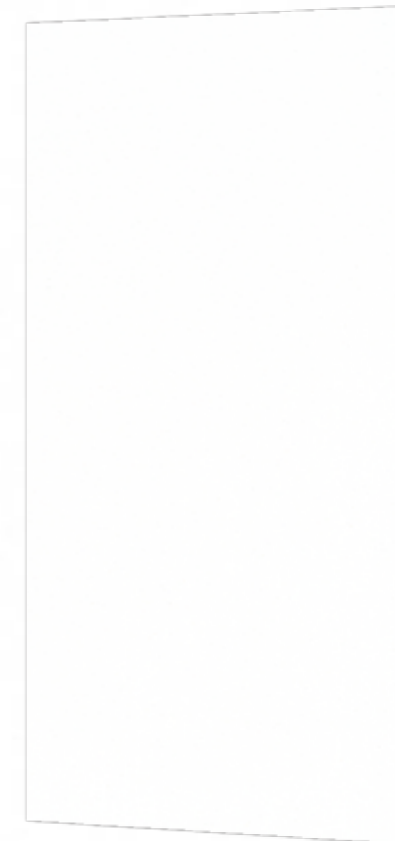
7119
Ash Gray



NEW

FEATURED

Denali White
1001



Scan to Get Inspirations

Denali White captures the awe-inspiring essence of North America's tallest peak, Denali. This ultra-white surface, devoid of any patterns, mirrors the untouched snowfields and majestic serenity of the Alaskan mountain. The immaculate whiteness evokes the pure, unblemished beauty of Denali's summit, where every inch radiates clarity and tranquility.



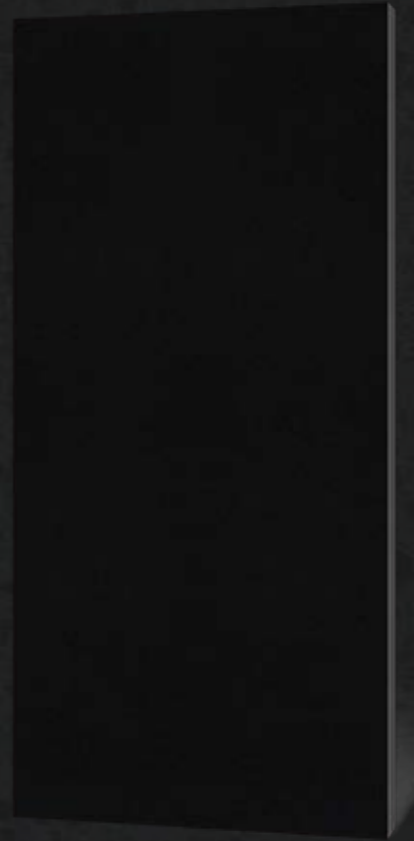
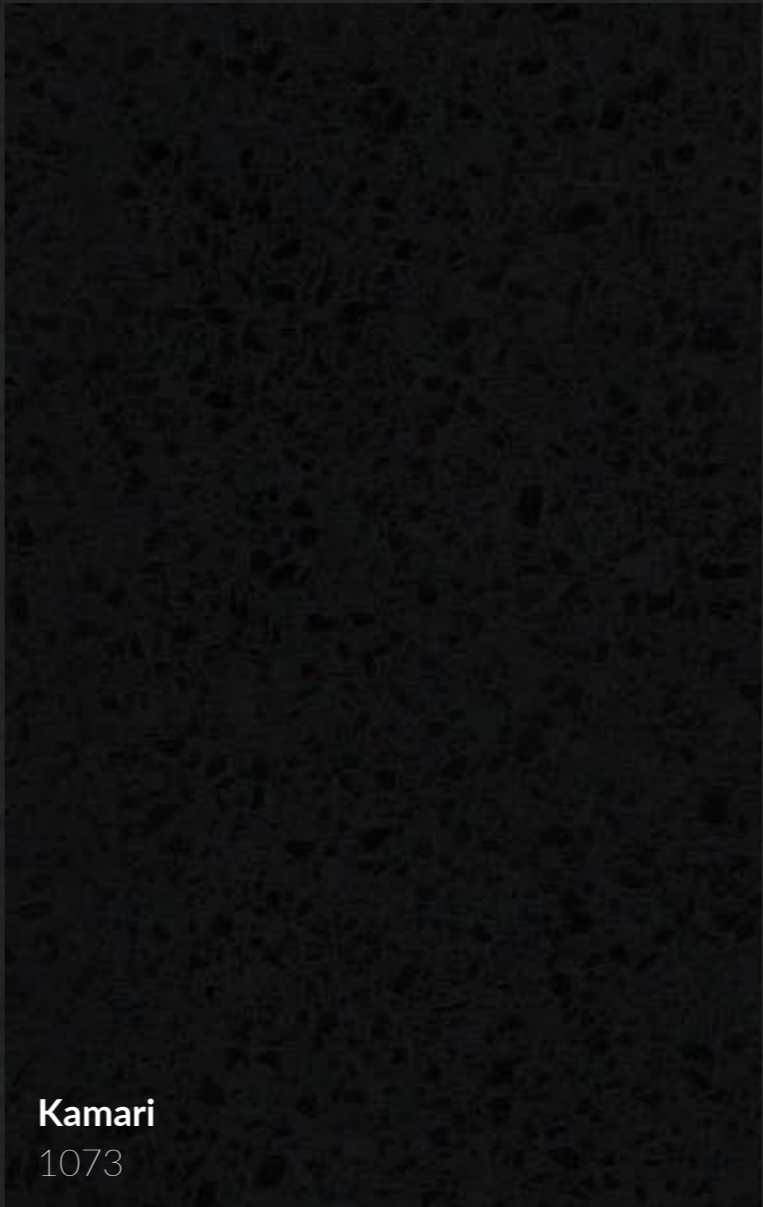
Tahiti White
1010



Scan to Get Inspirations

As innocent as white, Tahiti is a place close to heaven. Perhaps there is nothing holier than white, nothing purer than white, and nothing more real than white. The place where dreams begin can only be felt with the heart. Tahiti White, a pure white surface, is a color away from the hustle and bustle. All you need to do is be still and witness.



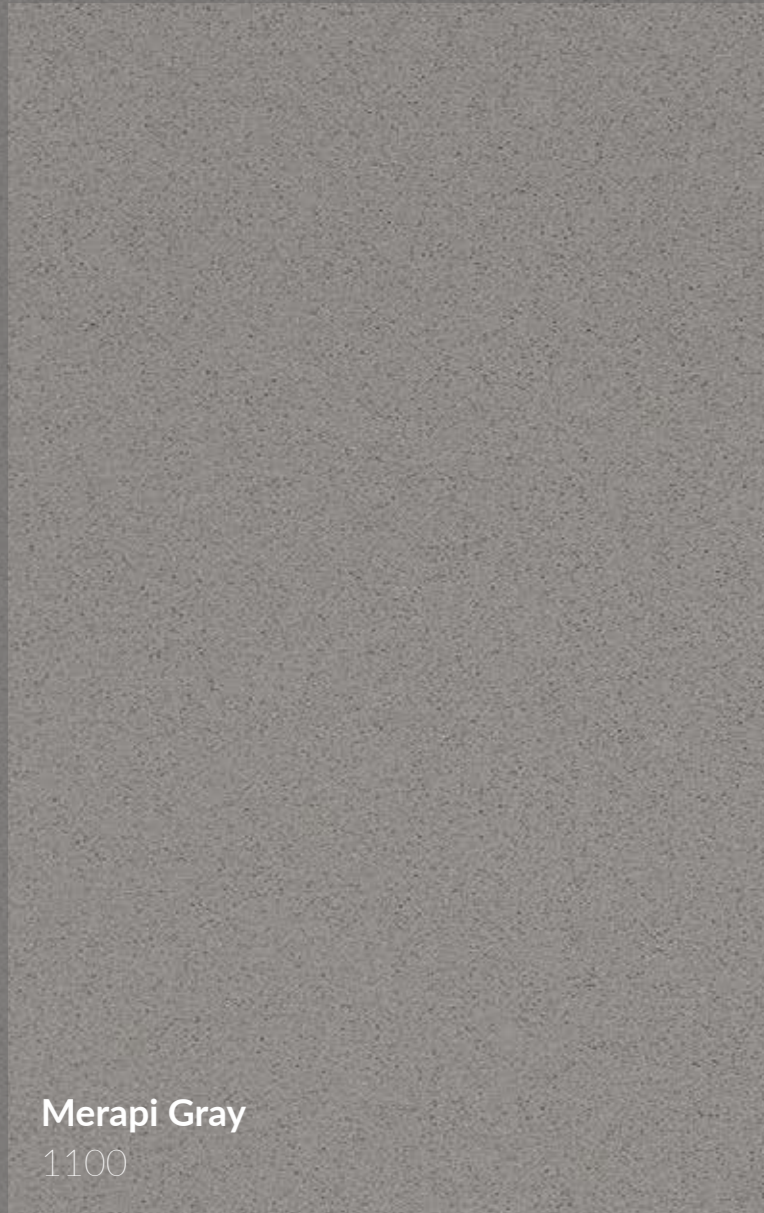


Kamari
1073



Scan to Get Inspirations

Accentuated by a soft black hue, Kamari is the perfect surface for making a bold statement. It brings to mind Kamari Beach in Greece. The 3 km long Kamari beach bears the scars of the volcanic eruptions, which also covered the beach in interesting formations of jagged lava rocks and black pebbles, imbuing the surfaces with a wild, untamed, and unrestrained personality.



Merapi Gray
1100



Scan to Get Inspirations

Merapi Gray quartz surfaces have an ash gray tone. They call to mind scenes of falling volcanic ash on the splendor of a gray world the moment fiery magma breaks through thousands of years of ice and snow, the soaring lava lighting up the pitch-dark night sky.



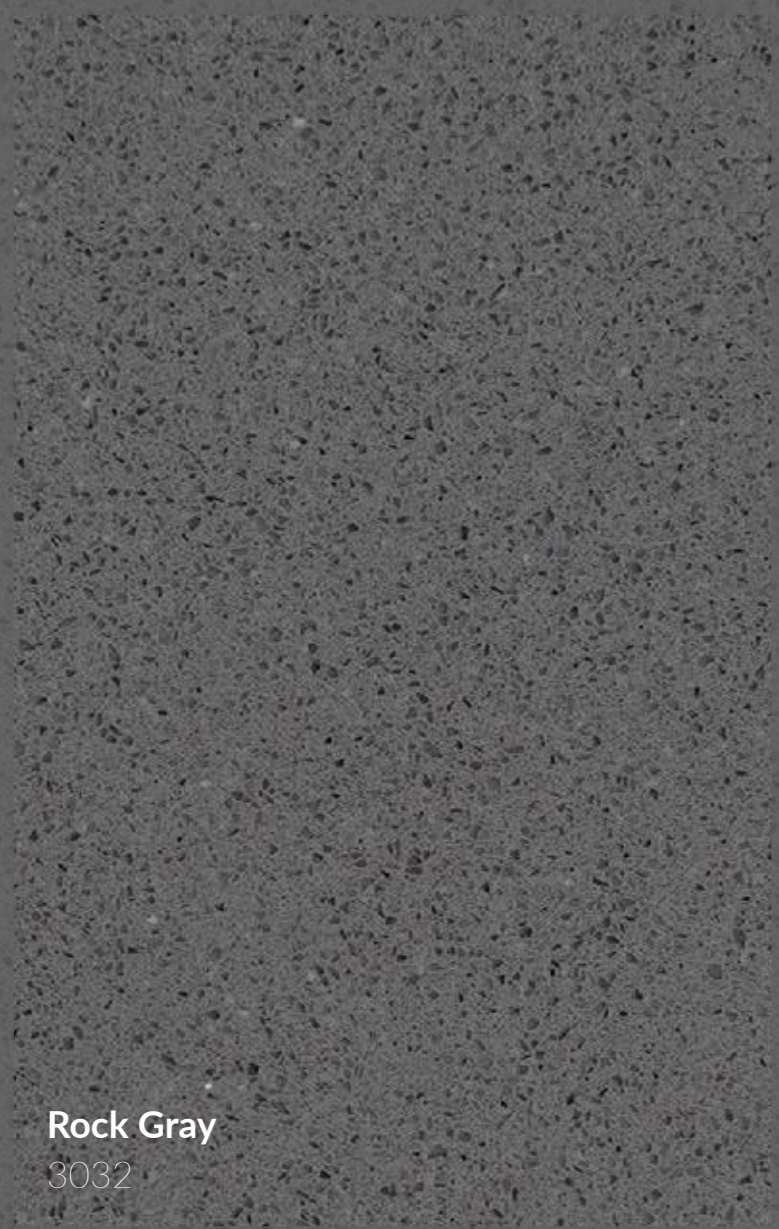


Moreno White
3003



Scan to Get Inspirations

Beautiful and magnificent, Moreno White is as crystal clear as a glacier. The fine particles of the quartz surface on the glacier-white background are reminiscent of snowflakes. Under the action of heat or pressure, it turns into crystallized snow, called firn. Firn, the base form of glaciers, is tiny and soft.



Rock Gray
3032



Scan to Get Inspirations

Rock Gray is a harmonious and elegant hue giving the most abundant and widest space in the background. The cold and elegant, warm and soft elements fused under the blooming surface of Rock Gray play the most graceful symphony. It is not merely introverted and rich in texture, but also pleasant in appearance, showing a unique temperament.





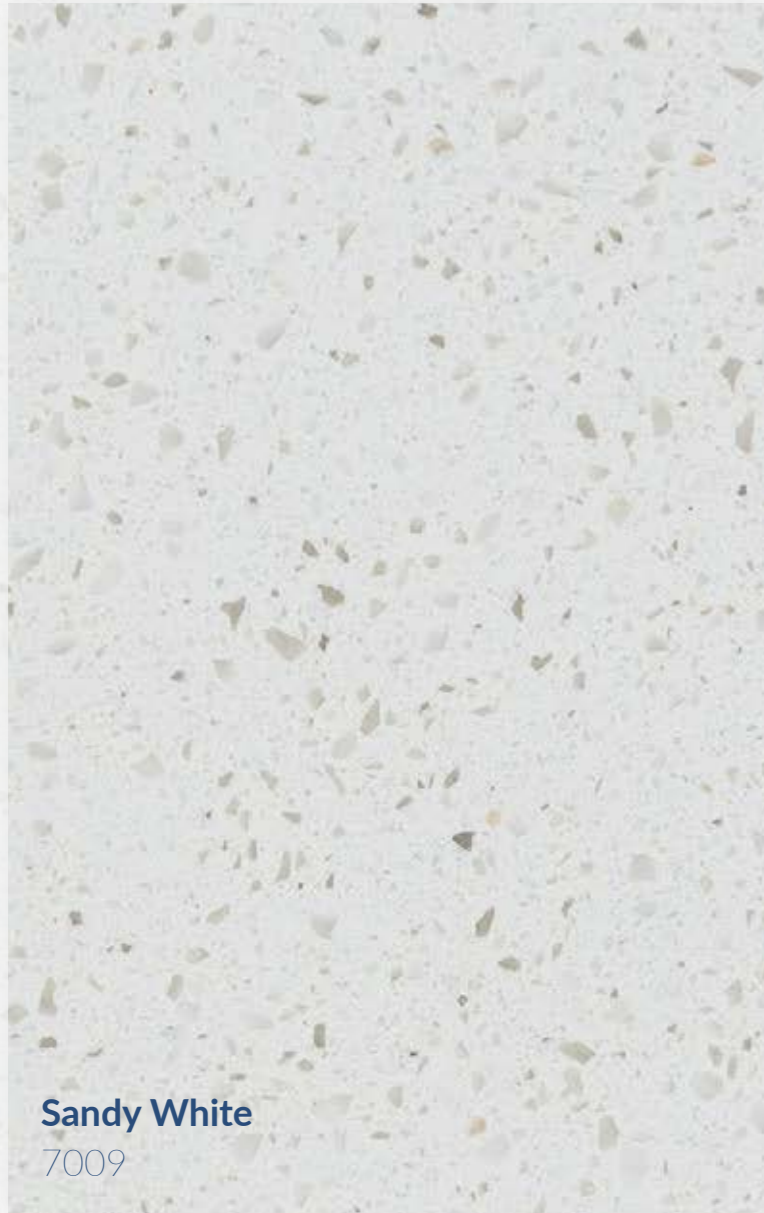
Volcano Gray

3041

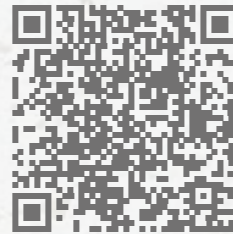


Scan to Get Inspirations

Volcano Gray brings to mind images of volcanic ash formed by the breakdown of solid rock and molten liquid into fine particles during explosive volcanic activity. Dark gray interspersed with particulate matter across the whole surface, unrestrained but stable.



Sandy White
7009



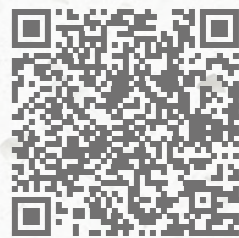
Scan to Get Inspirations

Fresh and clean, Sandy White presents a large-grain milky sand that comforts restless hearts. Warm sand under the sunshine stretching far away and lying glittering allures touching and playing. Like milk flowing over feet, Sandy White creates a whiff of mildness.





Crystal White
7027

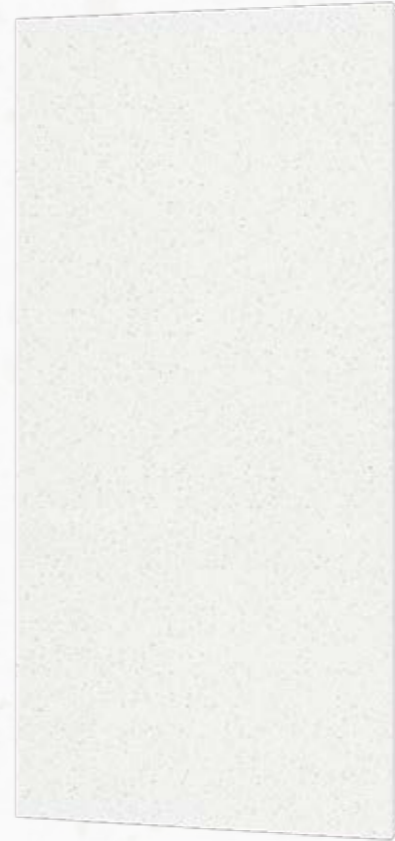


Scan to Get Inspirations

It is said that when the ancient Romans first obtained crystals in the Alps, they were very surprised since they thought crystal was evolved ice. Crystal White has a creamy white background with pure crystal-like spots floating throughout the surface. It's like condensed dew on the tips of leaves in the morning, full of mystery and nobleness.



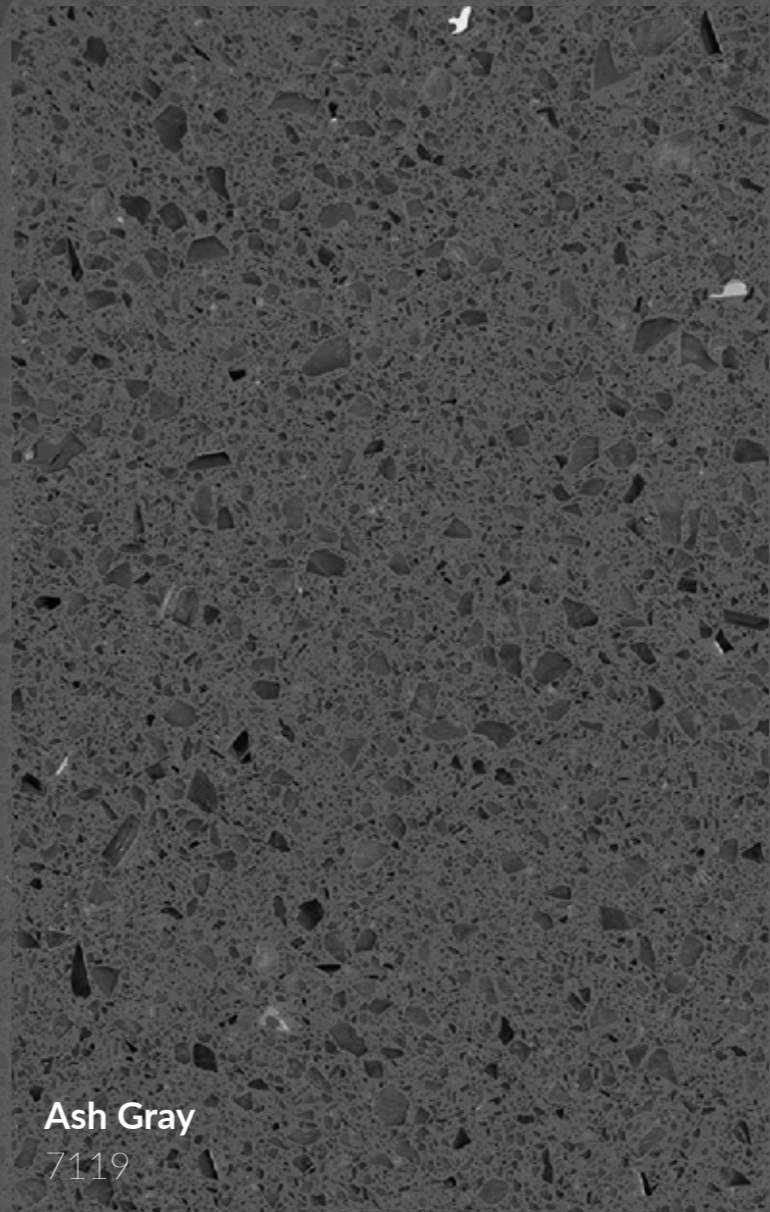
Shell White
7045



Scan to Get Inspirations

As shiny as a shell, Shell White has large particles that rest serenely on a creamy white background. Imagine lying in the soft sand, shells shining brightly offer infinite charm. That's the result of a thousand baptisms and finally dancing under the sunshine.





Ash Gray
7119



Scan to Get Inspirations

Ash Gray is infused with glass-like particles on a dark gray background, giving a striking quiet and dependable emotion. Different from black, Ash Gray is between white and black, creating a comfortable and exquisite experience.

PRODUCT INFO

Dimensions

Size	Dimension	Thickness	Weight*
Mega	139" (3530 mm) * 80" (2030 mm)	20 mm	344 kg / 759 lb
		30 mm	516 kg / 1138 lb
Jumbo	127" (3230 mm) * 64" (1630 mm)	20 mm	253 kg / 558 lb
		30 mm	379 kg / 836 lb

*Indicative weight, variable according to the specific weight of the slab.

Technical Data

Specifications	Test Method	Results
Water Absorption	ASTM C97	≤0.05%
Density	ASTM C97	2200 - 2400 KG/M ³
Flexural Strength	ASTM C880	Dry: 41.8 - 55.1 Mpa Wet: 47 - 62 Mpa
Compressive Strength	ASTM C170	Dry: 184 - 285 Mpa Wet: 192 - 272 Mpa
Modulus of Rupture	ASTM C99	Dry: 41.5 - 56.3 Mpa Wet: 43.1 - 55.5 Mpa
Bond Strength	ASTM C482	3.98 Mpa
Abrasion	ASTM C241	42 - 52
Freeze-Thaw Resistance	ASTM C1026	No obvious damage
Surface Burning	ASTM E84	Class A
Thermal Shock	ASTM C484	No visible defects
Thermal Conductivity	EN 12664:2001	0.469 - 0.504 W/(m.K)
Chemical Resistance	ASTM C650	Not affected

NOTE: The values quoted above are an average range of values of the different products tested and should be considered as an indication only.

*Pictures and information above are to be considered as indicative only. It cannot be copied, reproduced, or scanned in any way.

*All rights reserved.



